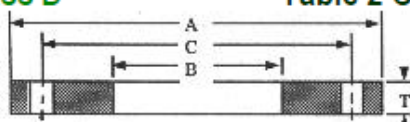
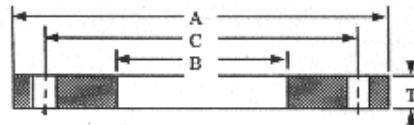


Formally Table 1 Class D
Table 2 Class D (Blinds from table 7)

AWWA standard steel-ring flanges, Class D* (175-150psi)

Nominal Pipe Size	OD of Flange	ID of Flange	Thickness of Flange (T)		Drilling Template			Weights	
					Number of Bolt Holes	Diam. of Bolt Holes	Diam. of Bolt Circle (C)		
								Slip-On	Blind
4	9.00	4.57	0.625	0.625	8	0.750	7.50	8	11
5	10.00	5.66	0.625	0.650	8	0.875	8.50	9	14
6	11.00	6.72	0.688	0.693	8	0.875	9.50	11	19
8	13.50	8.72	0.688	0.812	8	0.875	11.75	15	33
10	16.00	10.88	0.688	0.953	12	1.000	14.25	19	54
12	19.00	12.88	0.812	1.117	12	1.000	17.00	33	90
14	21.00	14.19	0.933	1.133	12	1.125	18.75	47	111
16	23.50	16.19	1.000	1.265	16	1.125	21.25	60	155
18	25.00	18.19	1.062	1.331	16	1.250	22.75	64	185
20	27.50	20.19	1.125	1.448	20	1.250	25.00	79	244
22	29.50	22.19	1.188	1.568	20	1.375	27.25	90	304
24	32.00	24.19	1.250	1.661	20	1.375	29.50	112	378
26	34.25	26.19	1.312	1.786	24	1.375	31.75	129	466
28	36.50	28.19	1.312	1.906	28	1.375	34.00	141	565
30	38.75	30.19	1.375	2.008	28	1.375	36.00	164	671
32	41.75	32.19	1.500	2.150	28	1.625	38.50	211	834
34	43.75	34.19	1.500	2.252	32	1.625	40.50	220	959
36	46.00	36.19	1.625	2.370	32	1.625	42.75	261	1116
38	48.75	38.19	1.625	2.506	32	1.625	45.25	301	1325
40	50.75	40.19	1.625	2.509	36	1.625	47.25	313	1438
42	53.00	42.19	1.750	2.729	36	1.625	49.50	364	1706
44	55.25	44.19	1.750	2.849	40	1.625	51.75	387	1935
46	57.25	46.19	1.750	2.952	40	1.625	53.75	404	2153
48	59.50	48.19	1.875	3.072	44	1.625	56.00	460	2420
50	61.75	50.19	2.000	3.196	44	1.875	58.25	507	2712
52	64.00	52.19	2.000	3.315	44	1.875	60.50	542	3021
54	66.25	54.19	2.125	3.435	44	1.875	62.75	614	3355
60	73.00	60.19	2.250	3.779	52	1.875	69.25	763	4481
66	80.00	66.19	2.500	4.136	52	1.875	76.00	1021	5890
72	86.50	72.19	2.625	4.480	60	1.875	82.50	1203	7458
78	93.00	78.19	2.750		64	2.125	89.00	1374	
84	99.75	84.19	2.875		64	2.125	95.50	1646	
90	106.50	90.19	3.000		68	2.438	102.00	1872	
96	113.25	96.19	3.250		68	2.438	108.50	2291	
102	120.00	102.19	3.250		72	2.688	114.50	2485	
108	126.75	108.19	3.375		72	2.688	120.75	2884	
114	133.50	114.19	3.500		76	2.938	126.75	3214	
120	140.25	120.19	3.500		76	2.938	132.75	3558	
126	147.00	126.19	3.750		80	3.188	139.25	4065	
132	153.75	132.19	3.875		80	3.188	145.75	4614	
138	160.50	138.19	4.000		84	3.438	152.00	5047	
144	167.25	144.19	4.125		84	3.438	158.25	5680	

Notes: All dimensions measured in inches. All weights are in pounds and are approximate. *Pressure rating at atmospheric temperature: sizes 4-12 in. inclusive, 175 psi; sizes larger than 12 in., 150 psi. These flanges have the same OD and drilling as ANSI/ASME B16.1 class 125 cast-iron flanges. In sizes 24in. and smaller they also match ANSI/ASME B16.5 150-psi standard for steel flanges.

Formally Table 4 Class E

AWWA standard steel-ring flanges, Class E* (275psi)
Table 5 Class E (Blinds from table 7) (C-207-94)

Nominal Pipe Size	OD of Flange	ID of Flange	Thickness of Flange (T)		Drilling Template			Weights	
					Number of Bolt Holes	Diam. of Bolt Holes	Diam. of Bolt Circle (C)		
								Slip-On	Blind
4	9.00	4.57	1.125	1.125	8	0.750	7.50	14	20
5	10.00	5.66	1.188	1.188	8	0.875	8.50	16	26
6	11.00	6.72	1.313	1.313	8	0.875	9.50	20	35
8	13.50	8.72	1.500	1.500	8	0.875	11.75	33	61
10	16.00	10.88	1.563	1.563	12	1.000	14.25	44	89
12	19.00	12.88	1.750	1.750	12	1.000	17.00	71	141
14	21.00	14.19	1.875	1.875	12	1.125	18.75	94	184
16	23.50	16.19	2.000	2.000	16	1.125	21.25	120	246
18	25.00	18.19	2.125	2.125	16	1.250	22.75	127	296
20	27.50	20.19	2.375	2.375	20	1.250	25.00	168	400
22	29.50	22.19	2.500	2.500	20	1.375	27.25	189	484
24	32.00	24.19	2.625	2.625	20	1.375	29.50	234	598
26	34.25	26.19	2.750	2.750	24	1.375	31.75	270	718
28	36.50	28.19	2.750	2.750	28	1.375	34.00	297	815
30	38.75	30.19	2.875	2.875	28	1.375	36.00	344	961
32	41.75	32.19	3.000	3.000	28	1.625	38.50	422	1163
34	43.75	34.19	3.000	3.050	32	1.625	40.50	441	1299
36	46.00	36.19	3.125	3.209	32	1.625	42.75	502	1511
38	48.75	38.19	3.125	3.394	32	1.625	45.25	580	1795
40	50.75	40.19	3.250	3.533	36	1.625	47.25	626	2025
42	53.00	42.19	3.375	3.695	36	1.625	49.50	701	2309
44	55.25	44.19	3.375	3.997	40	1.625	51.75	747	2715
46	57.25	46.19	3.438	3.857	40	1.625	53.75	794	2813
48	59.50	48.19	3.500	4.159	44	1.625	56.00	858	3276
50	61.75	50.19	3.500	4.327	44	1.875	58.25	887	3671
52	64.00	52.19	3.625	4.489	44	1.875	60.50	982	4091
54	66.25	54.19	3.750	4.651	44	1.875	62.75	1083	4542
60	73.00	60.19	3.875	5.116	52	1.875	69.25	1313	6066
66	80.00	66.19	4.250	5.601	52	1.875	76.00	1736	7976
72	86.50	72.19	4.375	6.066	60	1.875	82.50	2005	10099
78	93.00	78.19	4.750		64	2.125	89.00	2374	
84	99.75	84.19	4.750		64	2.125	95.50	2719	
90	106.50	90.19	5.125		68	2.438	102.00	3197	
96	113.25	96.19	5.125		68	2.438	108.50	3613	
102	120.00	102.19	5.500		72	2.688	114.50	4206	
108	126.75	108.19	5.500		72	2.688	120.75	4700	
114	133.50	114.19	5.875		76	2.938	126.75	5395	
120	140.25	120.19	5.875		76	2.938	132.75	5972	
126	147.00	126.19	6.250		80	3.188	139.25	6775	
132	153.75	132.19	6.250		80	3.188	145.75	7442	
138	160.50	138.19	6.750		84	3.438	152.00	8517	
144	167.25	144.19	6.750		84	3.438	158.25	9295	

Notes: All dimensions measured in inches. All weights in pounds and are approximate. *Pressure rating at atmospheric temperature is 275 psi. These flanges have the same diameter and drilling as ANSI/ASME B16.1 class 125 cast-iron flanges. In sizes 24in. and smaller they also match ANSI/ASME B16.5 150-psi standard for steel flanges.